

### Before you start with installation

#### Very important:

If you have already installed an older version of this gauge widget then please remove that widget first.

Follow [\*these steps\*](#) in this document to remove that older version of the widget

If there is no older version installed or the older version was successfully removed then please continue reading...

### Opening the .lcb file

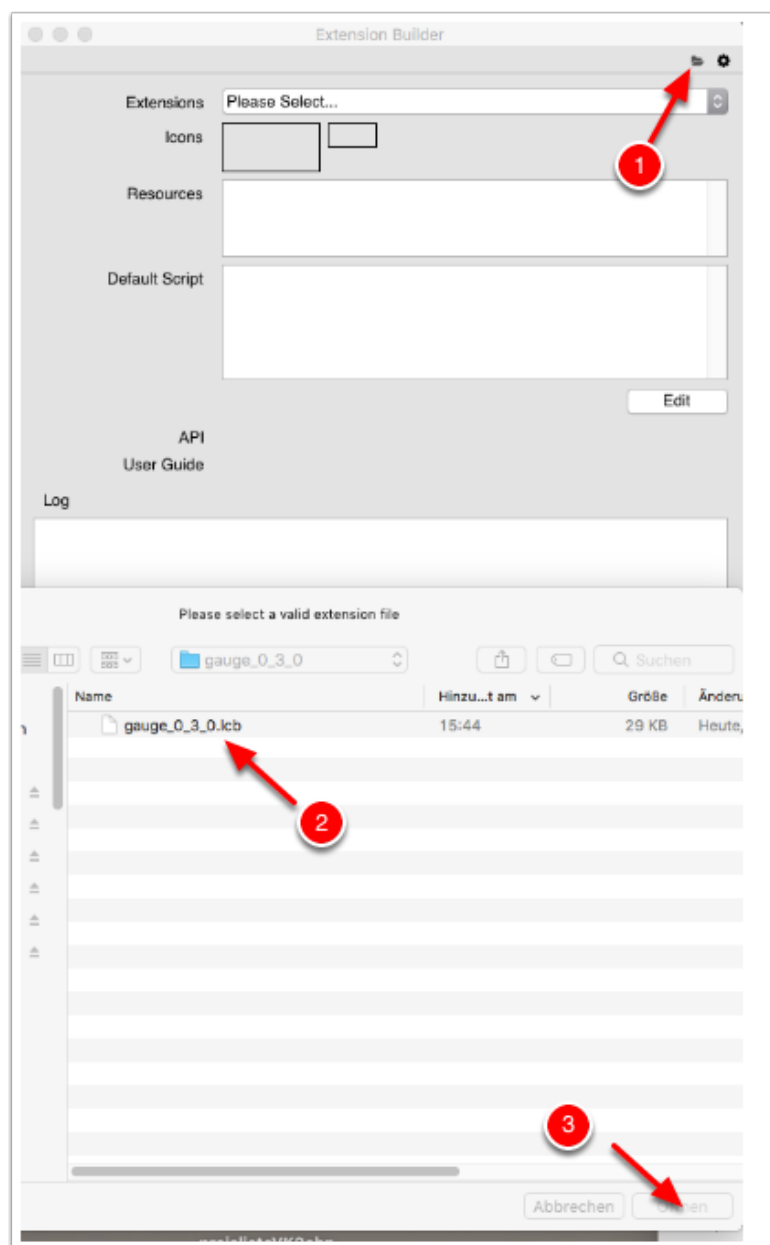
Open the extension builder (LC IDE -> Tools -> Extension Builder)

Click on the folder icon **(1)** and in the upcoming dialog

select the file gauge\_0\_3\_0.lcb file **(2)\*** and press open **(3)**

\*use either the included .lcb file or go to the Livecode forum to download the most recent version (see the first post) at

<http://forums.livecode.com/viewtopic.php?f=93&t=29348&p=154750&hilit=gauge#p154750>



### Installing the widget

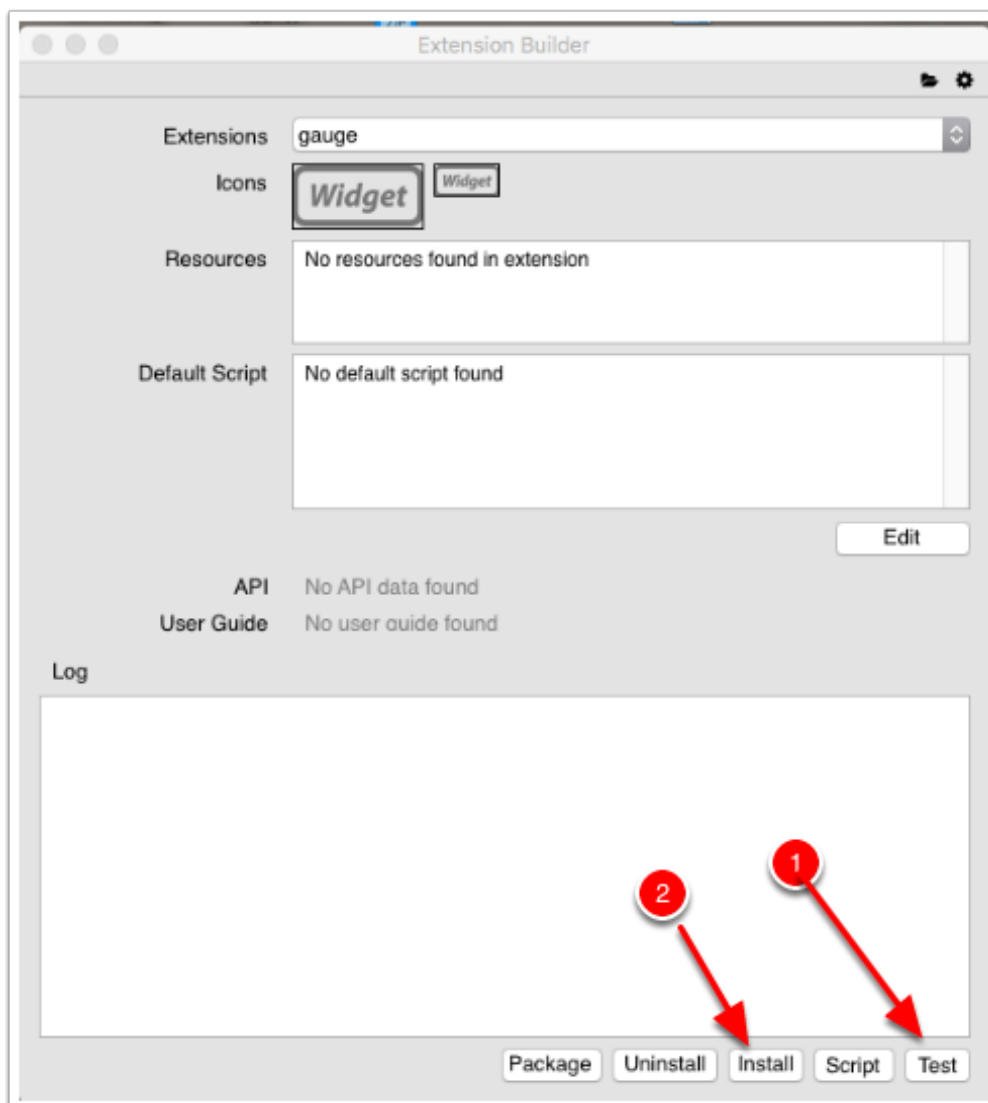
If you want test the widget before installing it, then press the **Test** button (1),

then after successful test press the **Install** button (2)

Or if you want to install the widget without testing then press **Install** right away.

You might see 2 dialogs asking you to select an icon file. Please ignore those and press cancel in both dialogs

There might be also a warning about a missing userguide. Please ignore this also.



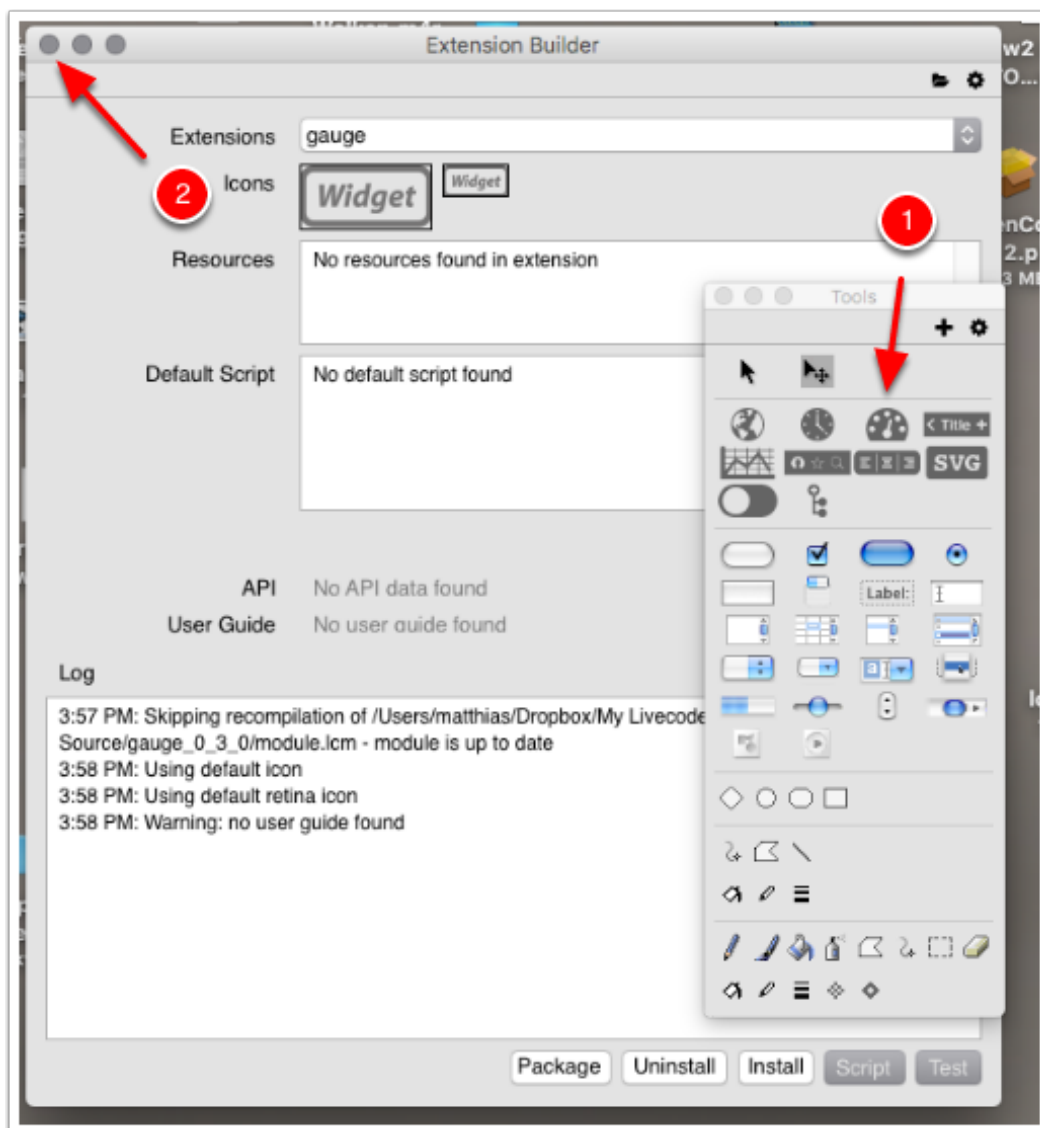
### Finishing the installation

If the installation was successful you will see a new icon in the widget area of the toolbar (1) and also new dictionary entries for the gauge widget.

Close the Extension Builder (2)

The widget should be ready for use now.

To be sure close **Livecode** and reopen it.



### Removing an older gauge widget

If there is already an older version of the gauge installed then you have to uninstall that first.

1. Close **Livecode** if open
2. go to your **My Livecode** folder
3. in the folder **Extensions** delete manually the folder **community.livecode.berndngauge**
4. in the folder **Interface** (also in the folder **Extensions**) delete the file **community.livecode.berndn.gauge.lci**
5. restart **Livecode**, there should be no gauge widget anymore.

Now go to [Opening the .lcb](#) file in this document to run through the steps to install the widget.

### Credits

Thanks to **Bernd Niggemann** for this really cool Gauge widget.

This document was created with Clarify. See <http://www.clarify-it.com> for more information about this great tool.

And as always thanks to the wonderful people at [LiveCode](#) and to all the community members.